

LEGEND:

---250--- CONTOUR

SUBDIVISION

P'UNOA

LOT 10

LOT 12

EXISTING EASEMENT 5
(FOR DITCH AND
ROADWAY PURPOSES)

LOT 2

LOT 1
5.101 ACS.

LOT 13

P'UNOA
SUBDIVISION

EASEMENT
E-16

EASEMENT
E-17

IRRIGATION WATER
POTABLE WATER

MELE KOMO PLACE

LOT 5

LOT 6

**PLAT MAP SHOWING
LOT 1
PU'UNOA SUBDIVISION II
AT LAHAINA, MAUI, HAWAII**

LOT 7

NOTES:

1. CONTOURS AS SHOWN ARE FROM AERIAL METHODS AND ARE APPROXIMATE.
2. THE LOCATIONS OF THE POTABLE WATER, IRRIGATION WATER, ELECTRICAL, TELEPHONE AND CABLE T.V. LATERALS ARE FROM THE CONSTRUCTION PLAN DRAWINGS AND HAVE NOT BEEN VERIFIED IN THE FIELD.



Tax Map Key (2) 4-7-03 : 01 (PORTION)
(2) 4-7-02 : 07, 05, 04 (PORTION)

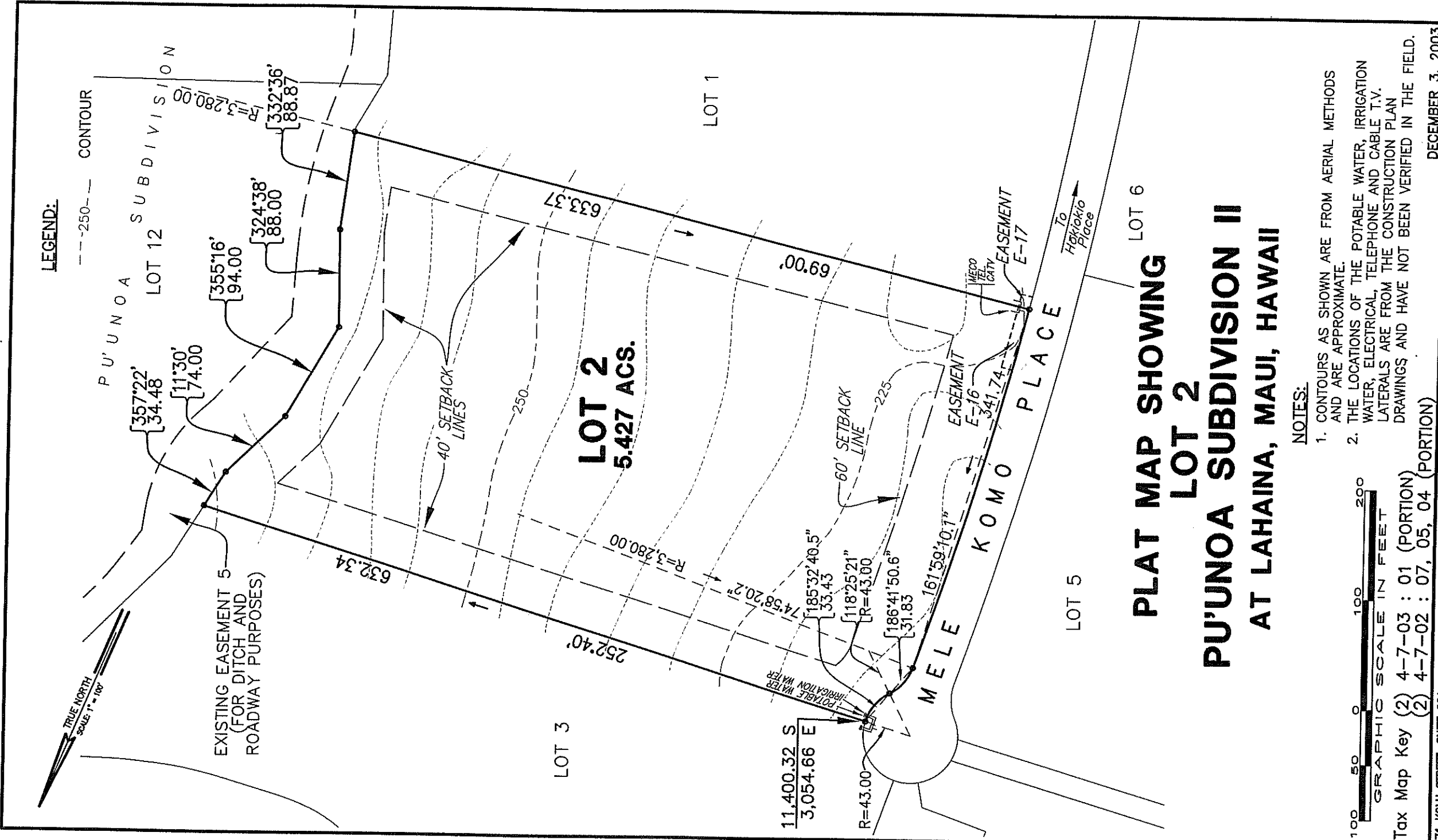
871 KOLU STREET, SUITE 201
WAILUKU, MAUI, HAWAII 96793

R. T. TANAKA ENGINEERS, INC.
LAND SURVEYORS - CML & STRUCTURAL ENGINEERS

(PORTION)

DECEMBER 3, 2003

JOB NO. 99-078



**PLAT MAP SHOWING
LOT 2
PU'UNOA SUBDIVISION II
AT LAHAINA, MAUI, HAWAII**

NOTES:

1. CONTOURS AS SHOWN ARE FROM AERIAL METHODS AND ARE APPROXIMATE.
2. THE LOCATIONS OF THE POTABLE WATER, IRRIGATION WATER, ELECTRICAL, TELEPHONE AND CABLE T.V. LATERALS ARE FROM THE CONSTRUCTION PLAN DRAWINGS AND HAVE NOT BEEN VERIFIED IN THE FIELD.



Tax Map Key (2) 4-7-03 : 01 (PORTION)
(2) 4-7-02 : 07, 05, 04 (PORTION)

871 KOLU STREET, SUITE 201
WAILUKU, MAUI, HAWAII 96793

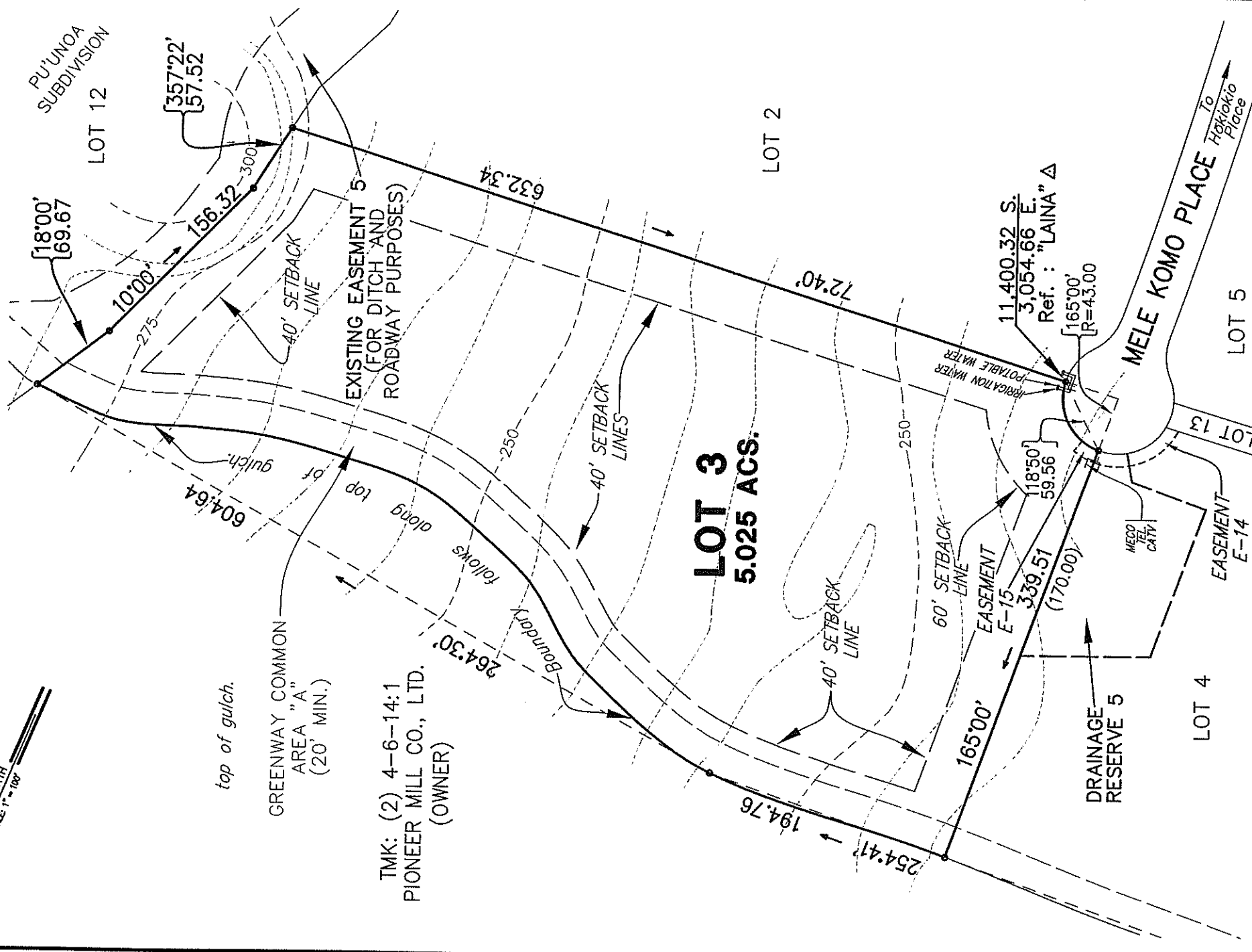
R. T. TANAKA ENGINEERS, INC.
LAND SURVEYORS - CIVIL & STRUCTURAL ENGINEERS

DECEMBER 3, 2003
JOB NO. 99-078

TRUE NORTH
SCALE: 1" = 100'

LEGEND:

--- 250 --- CONTOUR



TMK: (2) 4-6-14:1
PIONEER MILL CO., LTD.
(OWNER)

**PLAT MAP SHOWING
LOT 3
PU'UNOA SUBDIVISION II
AT LAHAINA, MAUI, HAWAII**



Tax Map Key (2) 4-7-03 : 01 (PORTION)
(2) 4-7-02 : 07, 05, 04 (PORTION)

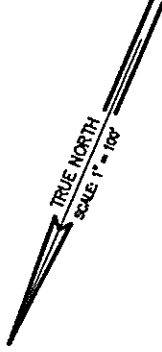
NOTES:

1. CONTOURS AS SHOWN ARE FROM AERIAL METHODS AND ARE APPROXIMATE.
2. THE LOCATIONS OF THE POTABLE WATER, IRRIGATION WATER, ELECTRICAL, TELEPHONE AND CABLE T.V. LATERALS ARE FROM THE CONSTRUCTION PLAN DRAWINGS AND HAVE NOT BEEN VERIFIED IN THE FIELD.

871 KOLU STREET, SUITE 201
WAILUKU, MAUI, HAWAII 96793

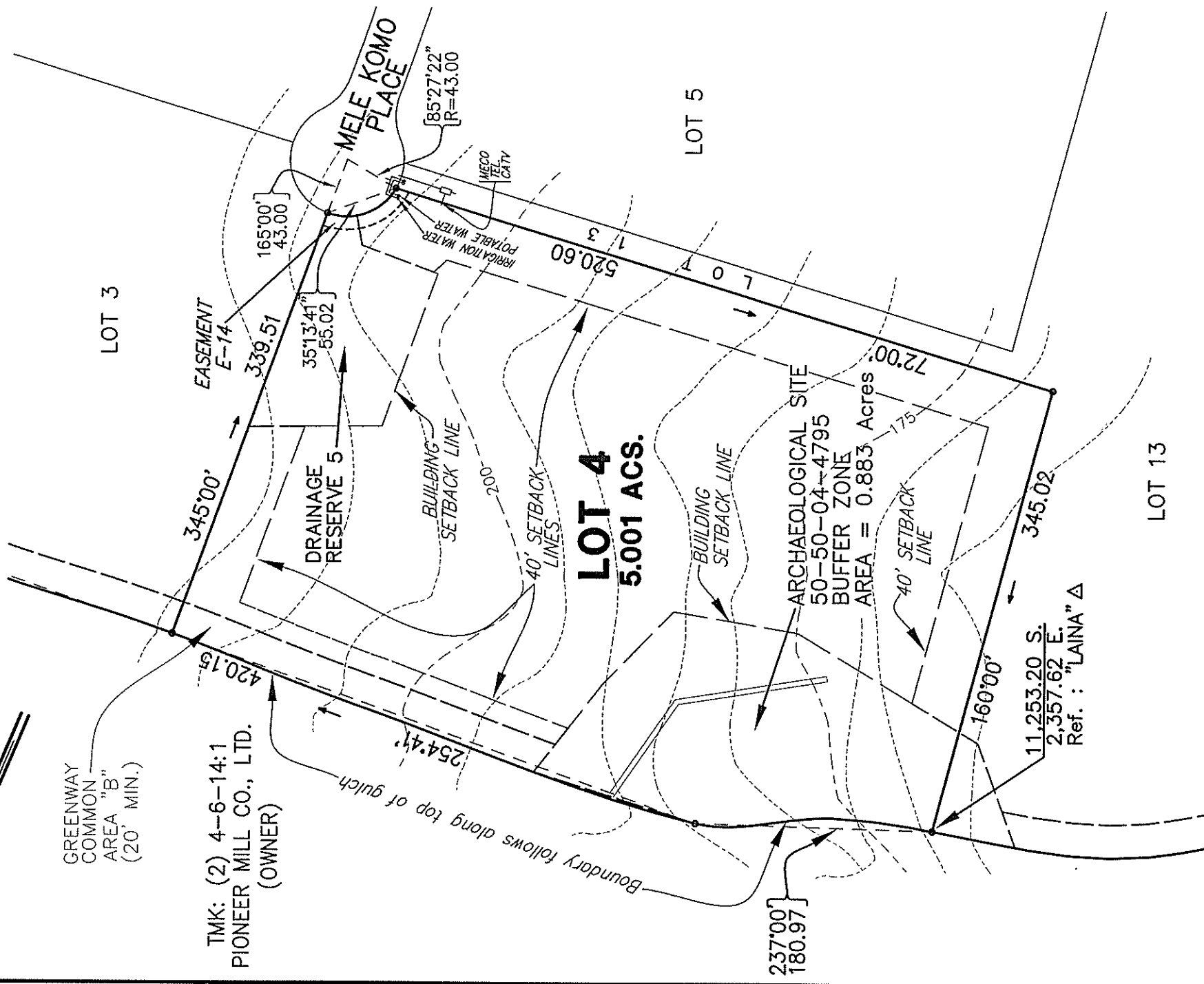
R. T. TANAKA ENGINEERS, INC.
LAND SURVEYORS - CIVIL & STRUCTURAL ENGINEERS

DECEMBER 3, 2003
JOB NO. 99-078



LEGEND:

--- 200 --- CONTOUR



**PLAT MAP SHOWING
LOT 4
PU'UNOA SUBDIVISION II
AT LAHAINA, MAUI, HAWAII**

NOTES:

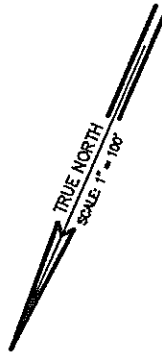
1. CONTOURS AS SHOWN ARE FROM AERIAL METHODS AND ARE APPROXIMATE.
2. THE LOCATIONS OF THE POTABLE WATER, IRRIGATION WATER, ELECTRICAL, TELEPHONE AND CABLE T.V. LATERALS ARE FROM THE CONSTRUCTION PLAN DRAWINGS AND HAVE NOT BEEN VERIFIED IN THE FIELD.



Tax Map Key (2) 4-7-03 : 01 (PORTION)
(2) 4-7-02 : 07, 05, 04 (PORTION)

REVISED : OCTOBER 07, 2004
DECEMBER 3, 2003

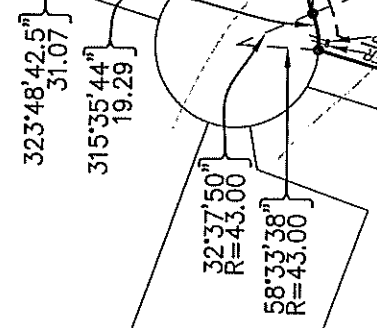
2:\1999\99-073\PUUNOA II PLATMAPS\1T 4



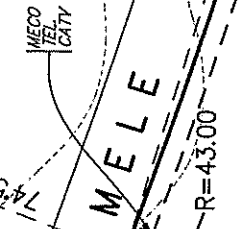
LEGEND:

---175--- CONTOUR

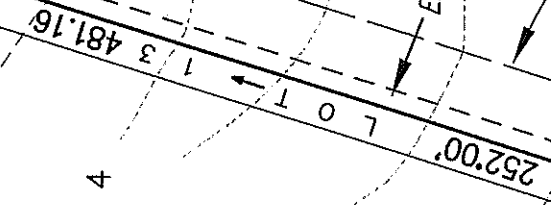
LOT 3



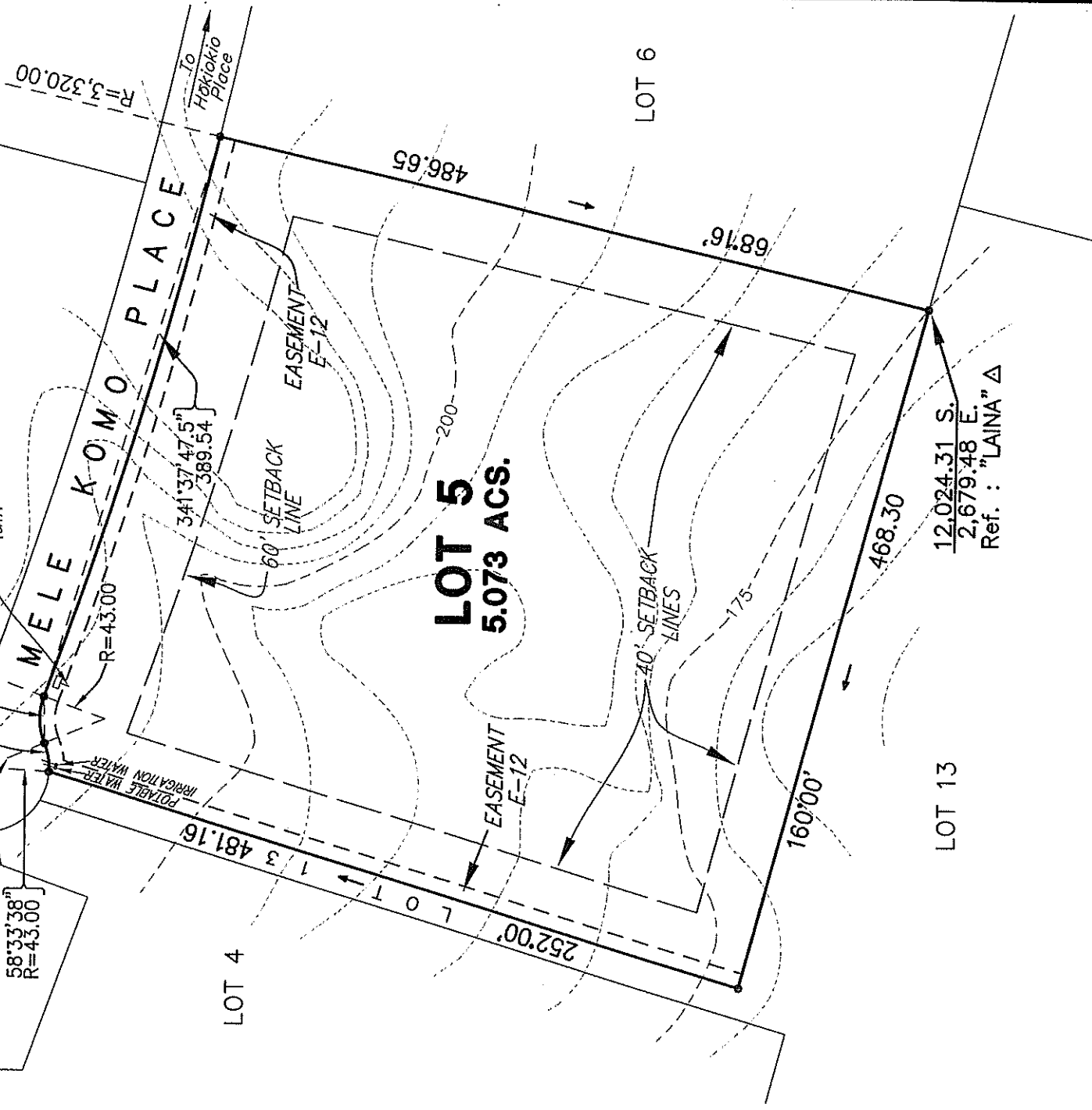
LOT 2



LOT 4



LOT 5
5.073 ACS.



LOT 6

LOT 13

12,024.31 S.
2,679.48 E.
Ref. : "LAINA" Δ

**PLAT MAP SHOWING
LOT 5
PU'UNOA SUBDIVISION II
AT LAHAINA, MAUI, HAWAII**



Tax Map Key (2) 4-7-03 : 01 (PORTION)
(2) 4-7-02 : 07, 05, 04 (PORTION)

NOTES:

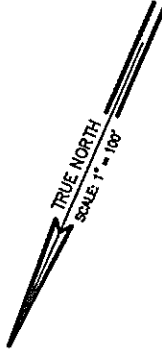
1. CONTOURS AS SHOWN ARE FROM AERIAL METHODS AND ARE APPROXIMATE.
2. THE LOCATIONS OF THE POTABLE WATER, IRRIGATION WATER, ELECTRICAL, TELEPHONE AND CABLE T.V. LATERALS ARE FROM THE CONSTRUCTION PLAN DRAWINGS AND HAVE NOT BEEN VERIFIED IN THE FIELD.

871 KOLU STREET, SUITE 201
WAILUKU, MAUI, HAWAII 96793

R. T. TANAKA ENGINEERS, INC.
LAND SURVEYORS - CIVIL & STRUCTURAL ENGINEERS

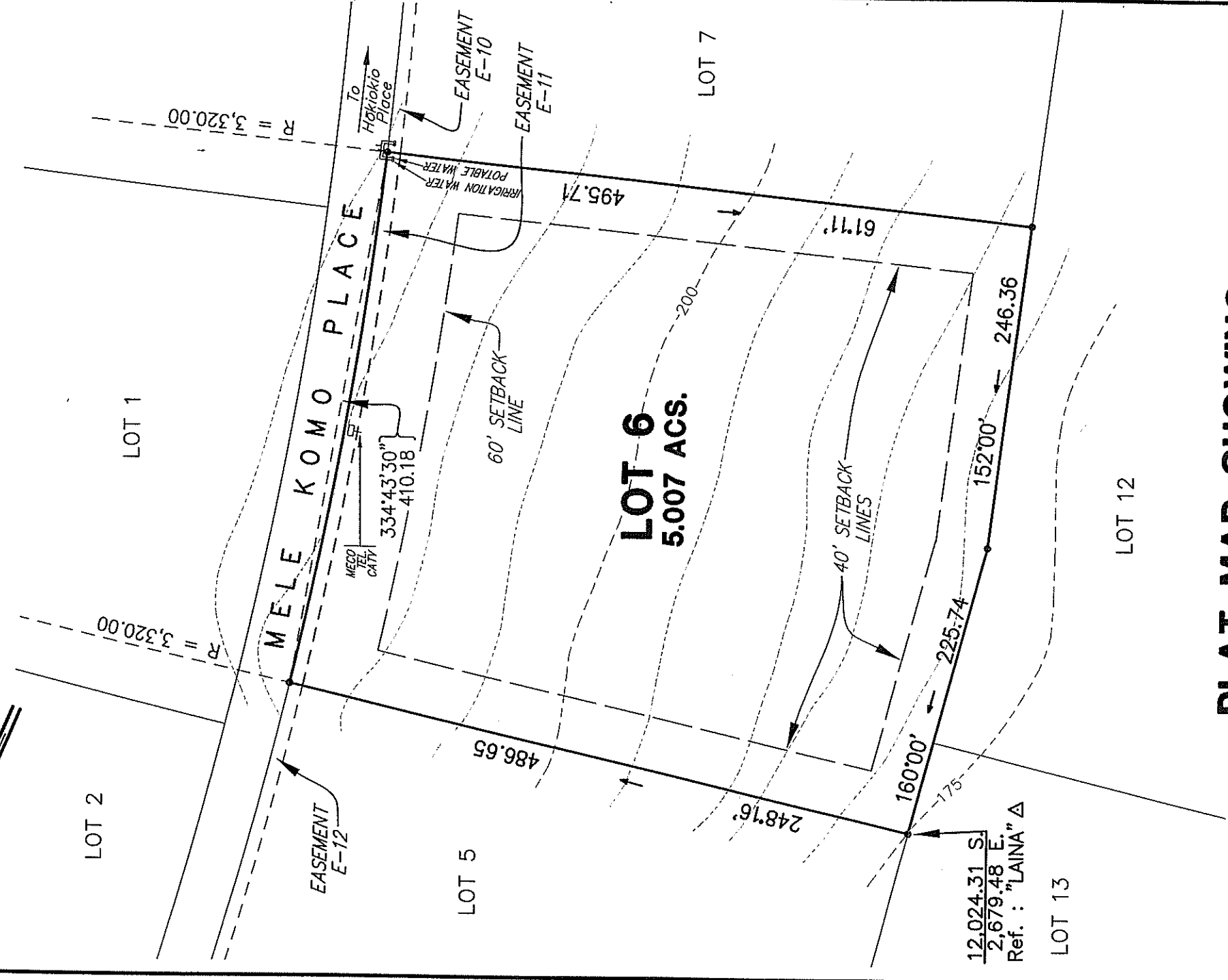
DECEMBER 3, 2003
JOB NO. 99-078

R:\1999\99-073\PUUNOA II PLATMAPS\LOT 5



LEGEND:

---250--- CONTOUR



**PLAT MAP SHOWING
LOT 6
PU'UNOA SUBDIVISION II
AT LAHAINA, MAUI, HAWAII**

NOTES:

1. CONTOURS AS SHOWN ARE FROM AERIAL METHODS AND ARE APPROXIMATE.
2. THE LOCATIONS OF THE POTABLE WATER, IRRIGATION WATER, ELECTRICAL, TELEPHONE AND CABLE T.V. LATERALS ARE FROM THE CONSTRUCTION PLAN DRAWINGS AND HAVE NOT BEEN VERIFIED IN THE FIELD.



100 50 0 100 200
GRAPHIC SCALE IN FEET
Tax Map Key (2) 4-7-03 : 01 (PORTION)
(2) 4-7-02 : 07, 05, 04 (PORTION)

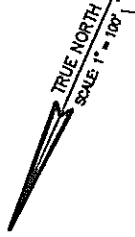
871 KOLU STREET, SUITE 201
WAILUKU, MAUI, HAWAII 96793

R. T. TANAKA ENGINEERS, INC.
LAND SURVEYORS - CIVIL & STRUCTURAL ENGINEERS

DECEMBER 3, 2003

JOB NO. 99-078

0:\1999\99-073\PUUNOA II PLATMAPS\LOT 6



LEGEND:

---225--- CONTOUR

LOT 2

IRRIGATION WATER
POTABLE WATER
MICO
YEL
CATV
R = 3,320.00

MELIE KOMO PLACE

326'00" → 115.77

EASEMENT
E-11

EASEMENT
E-10

331'23.27" R=2,270.00

13'41'43.5"
44.37
R=30.00

60' SETBACK
LINES

HOKIOKIO
PLACE

495.71

LOT 6

LOT 7
5.008 ACS.

67'41'43.5"

LOT 8

40' SETBACK
LINES

To
Honoluli
Highway

R=2,270.00

12,453.96 S.
2,872.34 E.
Ref. : "LAINA" Δ

344'00"

391.44

EASEMENT
E-9

152'00"

LOT 9

LOT 12



GRAPHIC SCALE IN FEET

Tax Map Key (2) 4-7-03 : 01 (PORTION)
(2) 4-7-02 : 07, 05, 04 (PORTION)

NOTES:

1. CONTOURS AS SHOWN ARE FROM AERIAL METHODS AND ARE APPROXIMATE.
2. THE LOCATIONS OF THE POTABLE WATER, IRRIGATION WATER, ELECTRICAL, TELEPHONE AND CABLE T.V. LATERALS ARE FROM THE CONSTRUCTION PLAN DRAWINGS AND HAVE NOT BEEN VERIFIED IN THE FIELD.

**PLAT MAP SHOWING
LOT 7
PU'UNOA SUBDIVISION II
AT LAHAINA, MAUI, HAWAII**

871 KOLU STREET, SUITE 201
WAILUKU, MAUI, HAWAII 96793

R. T. TANAKA ENGINEERS, INC.
LAND SURVEYORS - CIVIL & STRUCTURAL ENGINEERS

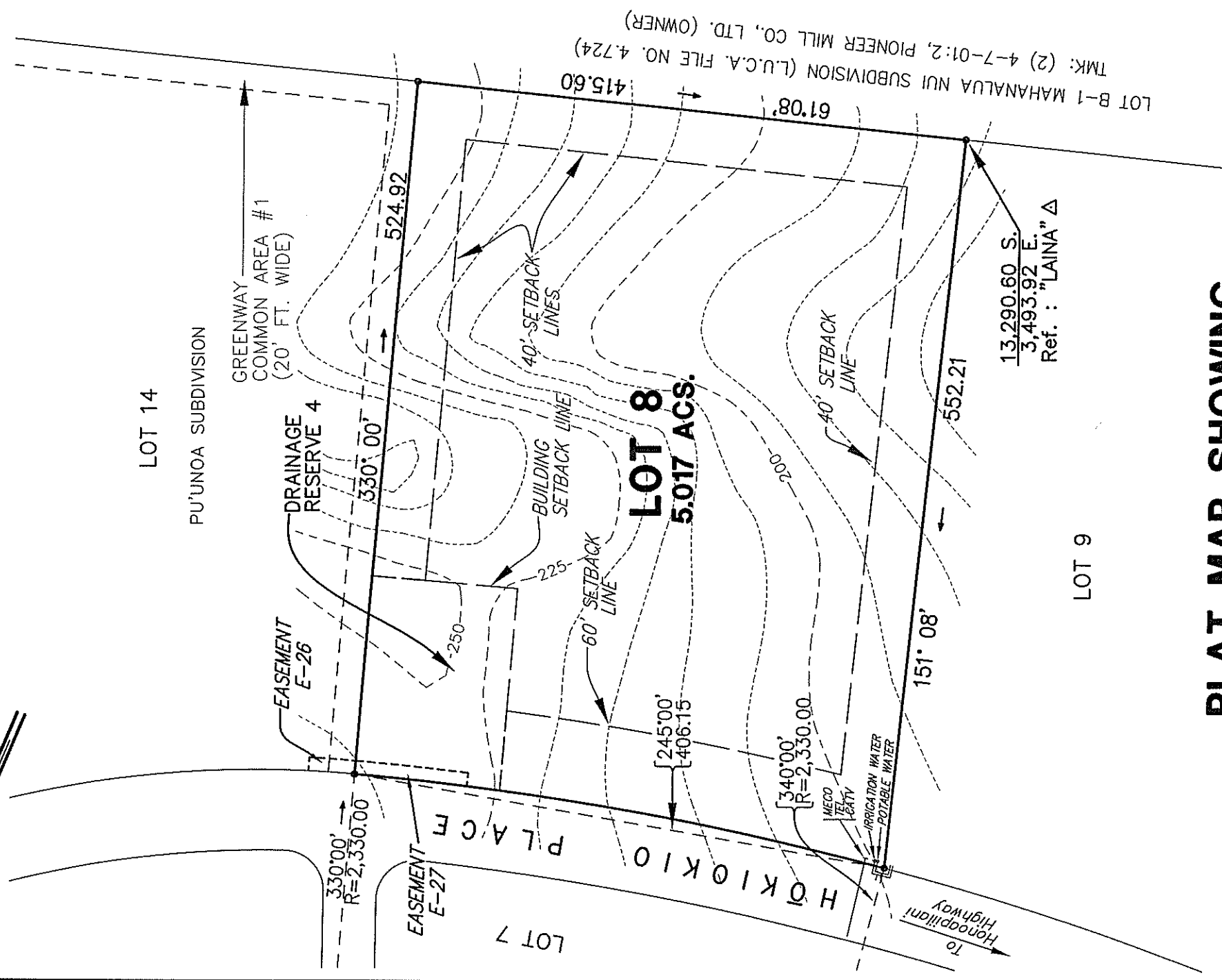
DECEMBER 3, 2003

JOB NO. 99-078

TRUE NORTH
SCALE 1" = 100'

LEGEND:

--- -250--- CONTOUR



**PLAT MAP SHOWING
LOT 8
PU'UNOA SUBDIVISION II
AT LAHAINA, MAUI, HAWAII**

NOTES:

1. CONTOURS AS SHOWN ARE FROM AERIAL METHODS AND ARE APPROXIMATE.
2. THE LOCATIONS OF THE POTABLE WATER, IRRIGATION WATER, ELECTRICAL, TELEPHONE AND CABLE T.V. LATERALS ARE FROM THE CONSTRUCTION PLAN DRAWINGS AND HAVE NOT BEEN VERIFIED IN THE FIELD.



Tax Map Key (2) 4-7-03 : 01 (PORTION)
(2) 4-7-02 : 07, 05, 04 (PORTION)

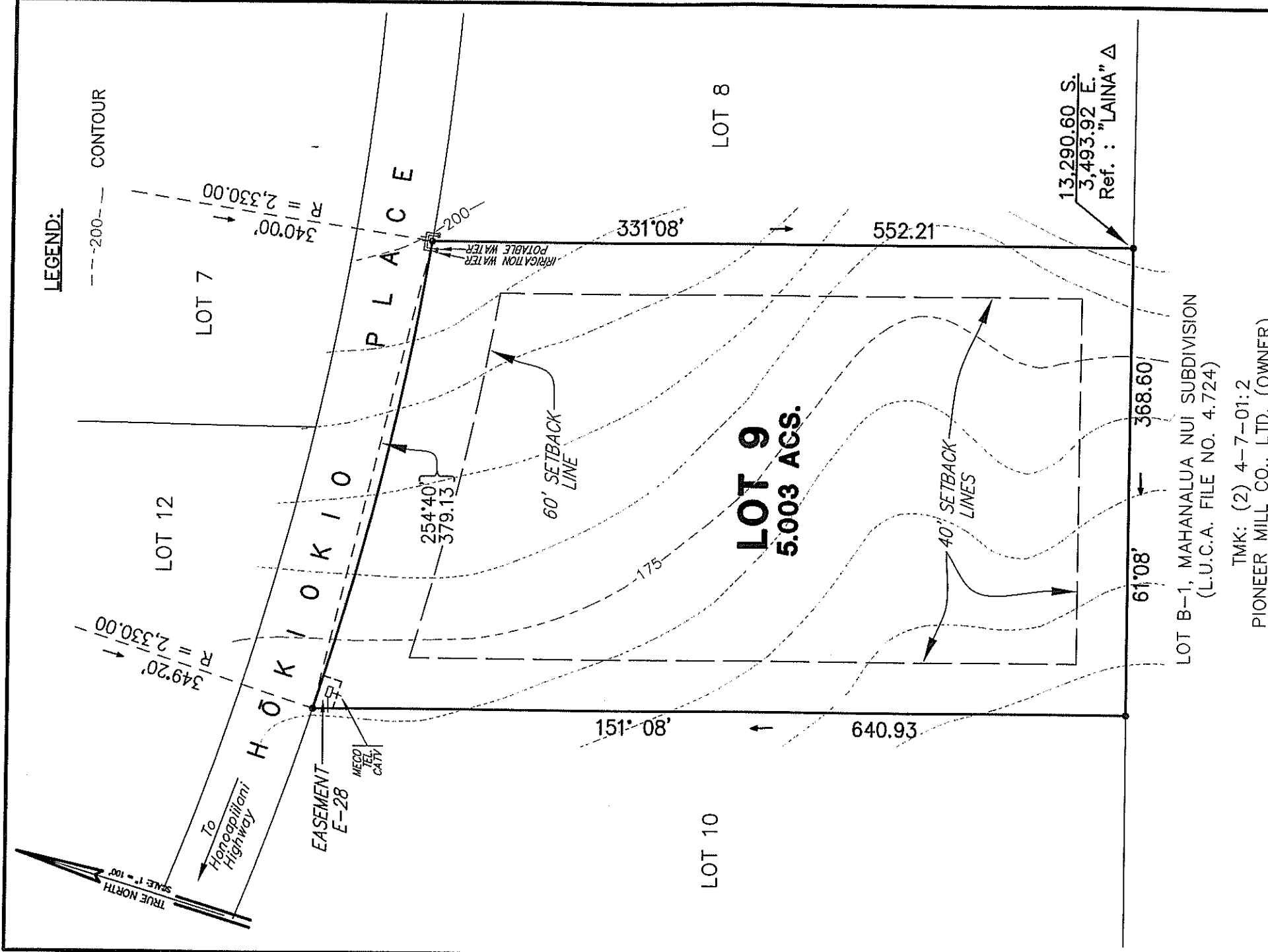
REVISED : OCTOBER 07, 2004
DECEMBER 3, 2003

871 KOLU STREET, SUITE 201
WAILUKU, MAUI, HAWAII 96793

R. T. TANAKA ENGINEERS, INC.
LAND SURVEYORS - CIVIL & STRUCTURAL ENGINEERS

JOB NO. 99-078

0:\1999\99-073\PUUNOA II PLATMAPS\1.T8



LOT B-1, MAHANALUA NUI SUBDIVISION
 (L.U.C.A. FILE NO. 4.724)

TMK: (2) 4-7-01:2
 PIONEER MILL CO., LTD. (OWNER)

PLAT MAP SHOWING LOT 9 PU'UNOA SUBDIVISION II AT LAHAINA, MAUI, HAWAII

NOTES:

1. CONTOURS AS SHOWN ARE FROM AERIAL METHODS AND ARE APPROXIMATE.
2. THE LOCATIONS OF THE POTABLE WATER, IRRIGATION WATER, ELECTRICAL, TELEPHONE AND CABLE T.V. LATERALS ARE FROM THE CONSTRUCTION PLAN DRAWINGS AND HAVE NOT BEEN VERIFIED IN THE FIELD.



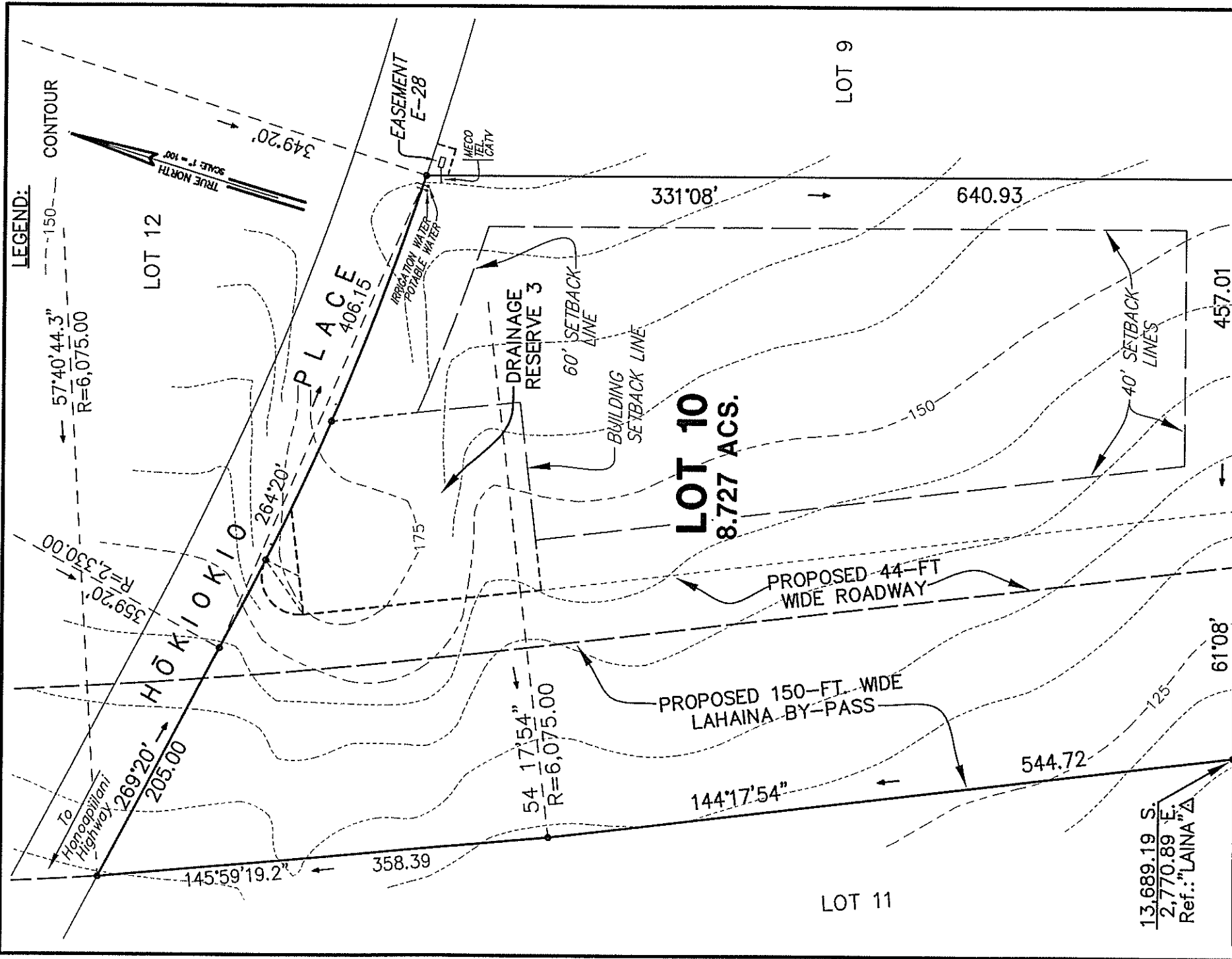
Tax Map Key (2) 4-7-03 : 01 (PORTION)
 (2) 4-7-02 : 07, 05, 04 (PORTION)

871 KOLU STREET, SUITE 201
 WAILUKU, MAUI, HAWAII 96793

R. T. TANAKA ENGINEERS, INC.
 LAND SURVEYORS - CIVIL & STRUCTURAL ENGINEERS

DECEMBER 3, 2003

JOB NO. 99-078



LEGEND:

57°40'44.3" R=6,075.00
 349°20' TRUE NORTH
 SCALE 1" = 100'

LOT 12

HŌKIŌKIŌ PLACE
 406.15
 264°20'

LOT 10
 8.727 ACS.

LOT 11

LOT 9

LOT B-1, MAHĀNALUA NUI SUBDIVISION
 (L.U.C.A. FILE NO. 4-724)

TMK: (2) 4-7-01:2
 PIONEER MILL CO., LTD. (OWNER)

**PLAT MAP SHOWING
 LOT 10
 PU'UNOA SUBDIVISION II
 AT LAHAINA, MAUI, HAWAII**

NOTES:

1. CONTOURS AS SHOWN ARE FROM AERIAL METHODS AND ARE APPROXIMATE.
2. THE LOCATIONS OF THE POTABLE WATER, IRRIGATION WATER, ELECTRICAL, TELEPHONE AND CABLE T.V. LATERALS ARE FROM THE CONSTRUCTION PLAN DRAWINGS AND HAVE NOT BEEN VERIFIED IN THE FIELD.



Tax Map Key (2) 4-7-03 : 01 (PORTION)
 (2) 4-7-02 : 07, 05, 04 (PORTION)

REVISED : OCTOBER 07, 2004
 REVISED : JANUARY 12, 2004
 REVISED : DECEMBER 3, 2003

871 KOLU STREET, SUITE 201
 WAILUKU, MAUI, HAWAII 96793

R. T. TANAKA ENGINEERS, INC.
 LAND SURVEYORS - CIVIL & STRUCTURAL ENGINEERS

JOB NO. 99-078