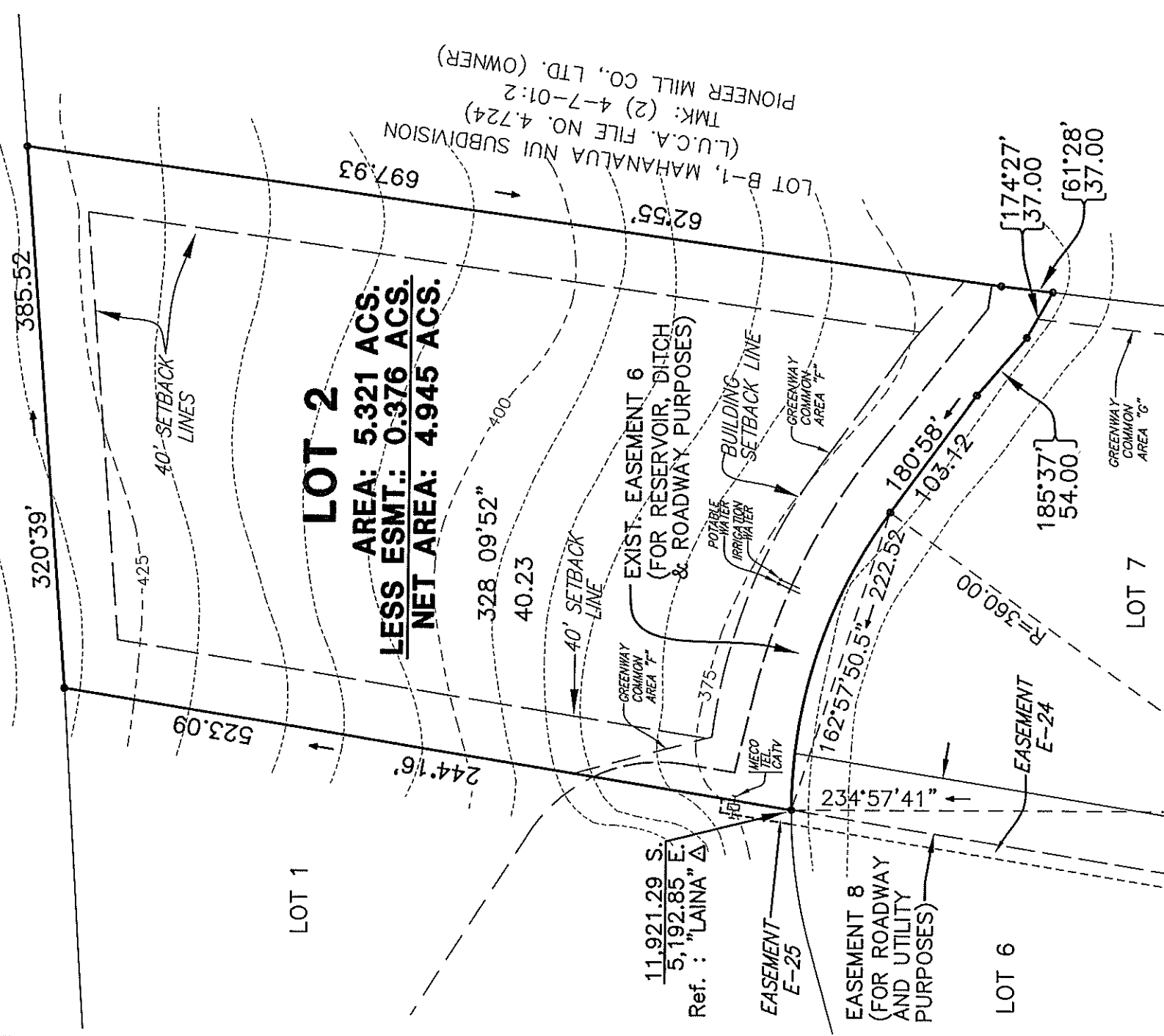


LEGEND:

--- 400 --- CONTOUR

TMK: (2) 4-7-04:4
PIONEER MILL CO., LTD.
(OWNER)



LOT 1

LOT 2

AREA: 5.321 ACS.
LESS ESMT.: 0.376 ACS.
NET AREA: 4.945 ACS.

LOT B-1, MAHANALUA NUI SUBDIVISION
(L.U.C.A. FILE NO. 4.724)
TMK: (2) 4-7-01:2
PIONEER MILL CO., LTD. (OWNER)

11.921.29 S.
5,192.85 E.
Ref. : "LAINA" Δ

EASEMENT
E-25

EASEMENT 8
(FOR ROADWAY
AND UTILITY
PURPOSES)

LOT 6

EASEMENT
E-24

LOT 7

**PLAT MAP SHOWING
LOT 2**

**PU'UNOA SUBDIVISION
AT LAHAINA, MAUI, HAWAII**

PHASE 1



Tax Map Key (2) 4-7-03 : 01 (PORTION)
(2) 4-7-02 : 07, 05, 04 (PORTION)

NOTES:

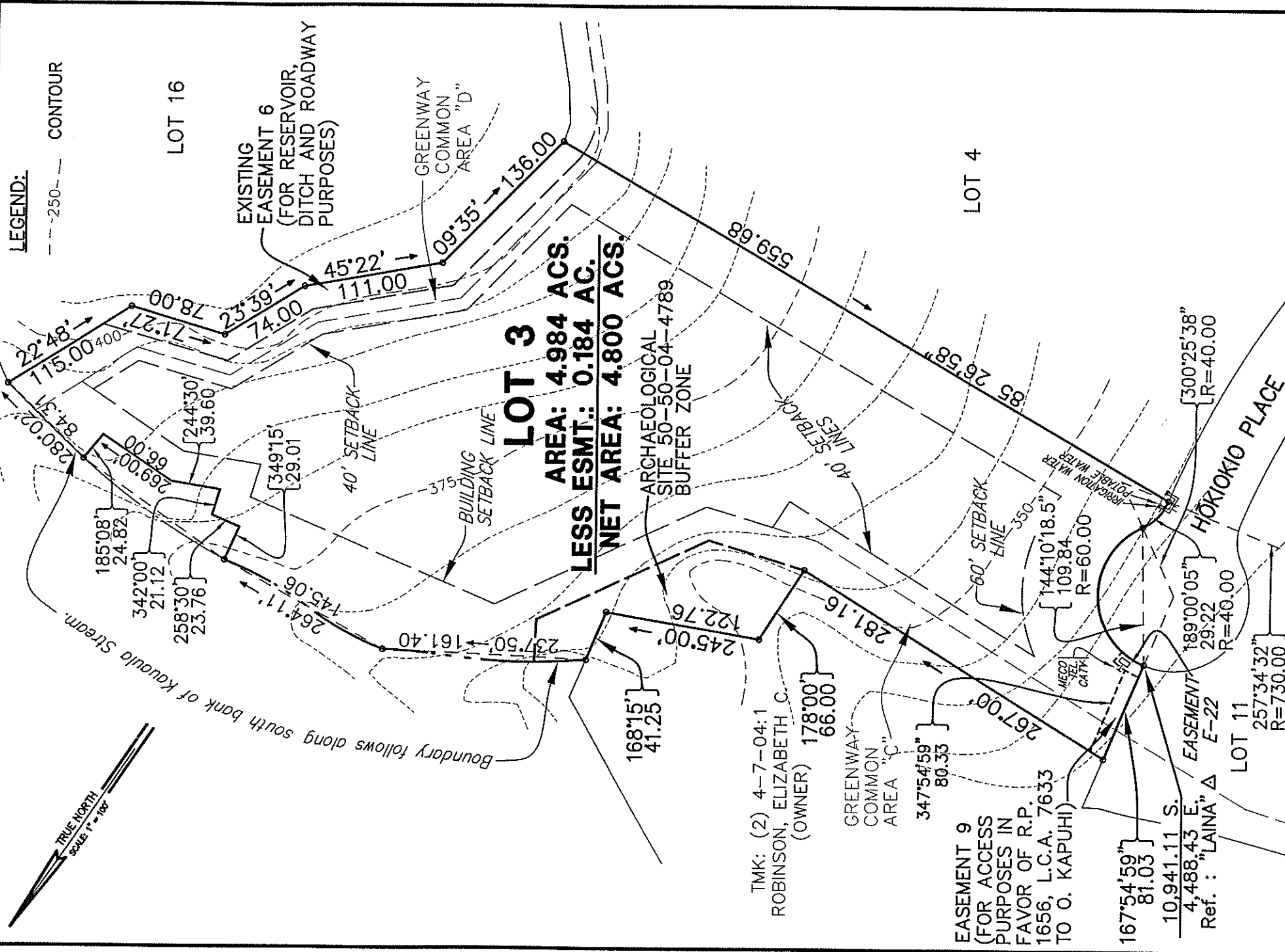
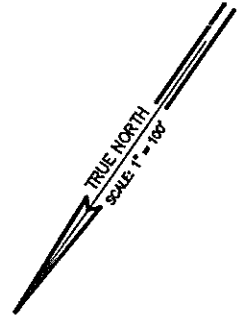
1. CONTOURS AS SHOWN ARE FROM AERIAL METHODS AND ARE APPROXIMATE.
2. THE LOCATIONS OF THE POTABLE WATER, IRRIGATION WATER, ELECTRICAL, TELEPHONE AND CABLE T.V. LATERALS ARE FROM THE CONSTRUCTION PLAN DRAWINGS AND HAVE NOT BEEN VERIFIED IN THE FIELD.

REVISED : OCTOBER 07, 2004
REVISED : JANUARY 19, 2004
REVISED : JANUARY 12, 2004
REVISED : DECEMBER 3, 2003

871 KOLU STREET, SUITE 201
WAILUKU, MAUI, HAWAII 96793

R. T. TANAKA ENGINEERS, INC.
LAND SURVEYORS - CIVIL & STRUCTURAL ENGINEERS

JOB NO. 99-078



LOT 3
AREA: 4.984 ACS.
LESS ESMT.: 0.184 AC.
NET AREA: 4.800 ACS.

TMK: (2) 4-7-04:1
 ROBINSON, ELIZABETH C.
 (OWNER) 178'00"
 66.00'

EASEMENT 9
 (FOR ACCESS
 PURPOSES IN
 FAVOR OF R.P.
 1656, L.C.A. 7633
 TO O. KAPUHI)

167'54'59"
 81.03'
 10.941.11 S.
 4,488.43 E.
 EASEMENT
 Ref. : "LAINA" Δ
 E-22

LOT 11
 257'34'32"
 R=730.00'

189'00'05"
 29.22'
 R=40.00'

300'25'38"
 R=40.00'

144'10'18.5"
 109.84'
 R=60.00'

350'
 60' SETBACK
 LINE

300'25'38"
 R=40.00'

144'10'18.5"
 109.84'
 R=60.00'

350'
 60' SETBACK
 LINE

**PLAT MAP SHOWING
 LOT 3
 PU'UNOA SUBDIVISION
 AT LAHAINA, MAUI, HAWAII**

PHASE 1



Tax Map Key (2) 4-7-03 : 01 (PORTION)
 (2) 4-7-02 : 07, 05, 04 (PORTION)

NOTES:

1. CONTOURS AS SHOWN ARE FROM AERIAL METHODS AND ARE APPROXIMATE.
2. THE LOCATIONS OF THE POTABLE WATER, IRRIGATION WATER, ELECTRICAL, TELEPHONE AND CABLE T.V. LATERALS ARE FROM THE CONSTRUCTION PLAN DRAWINGS AND HAVE NOT BEEN VERIFIED IN THE FIELD.

REVISED : OCTOBER 07, 2004
 REVISED : JANUARY 12, 2004
 DECEMBER 3, 2003

871 KOLU STREET, SUITE 201
 WAILUKU, MAUI, HAWAII 96793

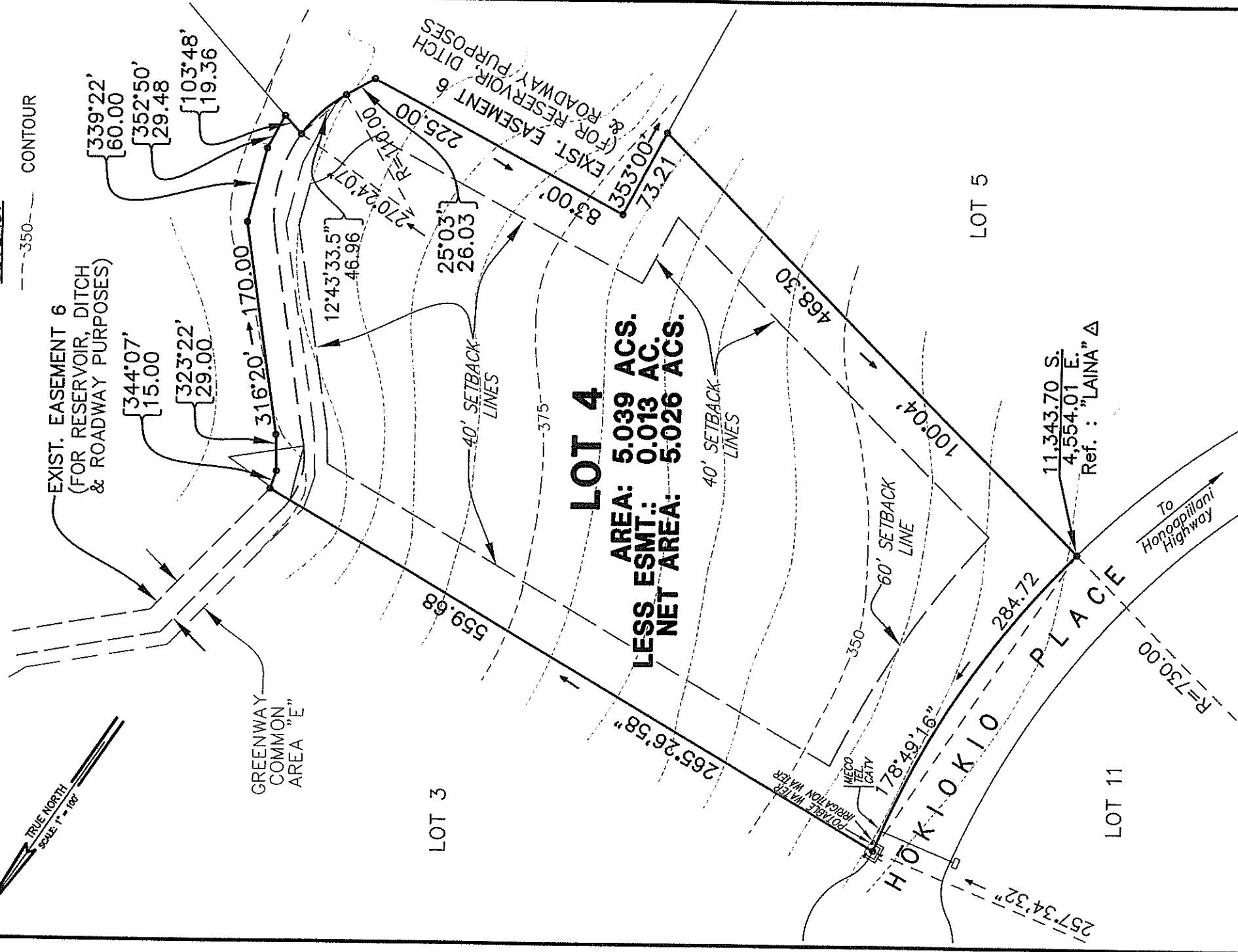
R. T. TANAKA ENGINEERS, INC.
 LAND SURVEYORS - CIVIL & STRUCTURAL ENGINEERS

JOB NO. 99-078



LEGEND:

--- 350 --- CONTOUR



LOT 4
AREA: 5.039 ACS.
LESS ESMT.: 0.013 AC.
NET AREA: 5.026 ACS.

**PLAT MAP SHOWING
 LOT 4
 PU'UNOA SUBDIVISION
 AT LAHAINA, MAUI, HAWAII**

PHASE 1



Tax Map Key (2) 4-7-03 : 01 (PORTION)
 (2) 4-7-02 : 07, 05, 04 (PORTION)

NOTES:

1. CONTOURS AS SHOWN ARE FROM AERIAL METHODS AND ARE APPROXIMATE.
2. THE LOCATIONS OF THE POTABLE WATER, IRRIGATION WATER, ELECTRICAL, TELEPHONE AND CABLE T.V. LATERALS ARE FROM THE CONSTRUCTION PLAN DRAWINGS AND HAVE NOT BEEN VERIFIED IN THE FIELD.

871 KOLU STREET, SUITE 201
 WAILUKU, MAUI, HAWAII 96793

R. T. TANAKA ENGINEERS, INC.
 LAND SURVEYORS - CML & STRUCTURAL ENGINEERS

DECEMBER 3, 2003

JOB NO. 99-078

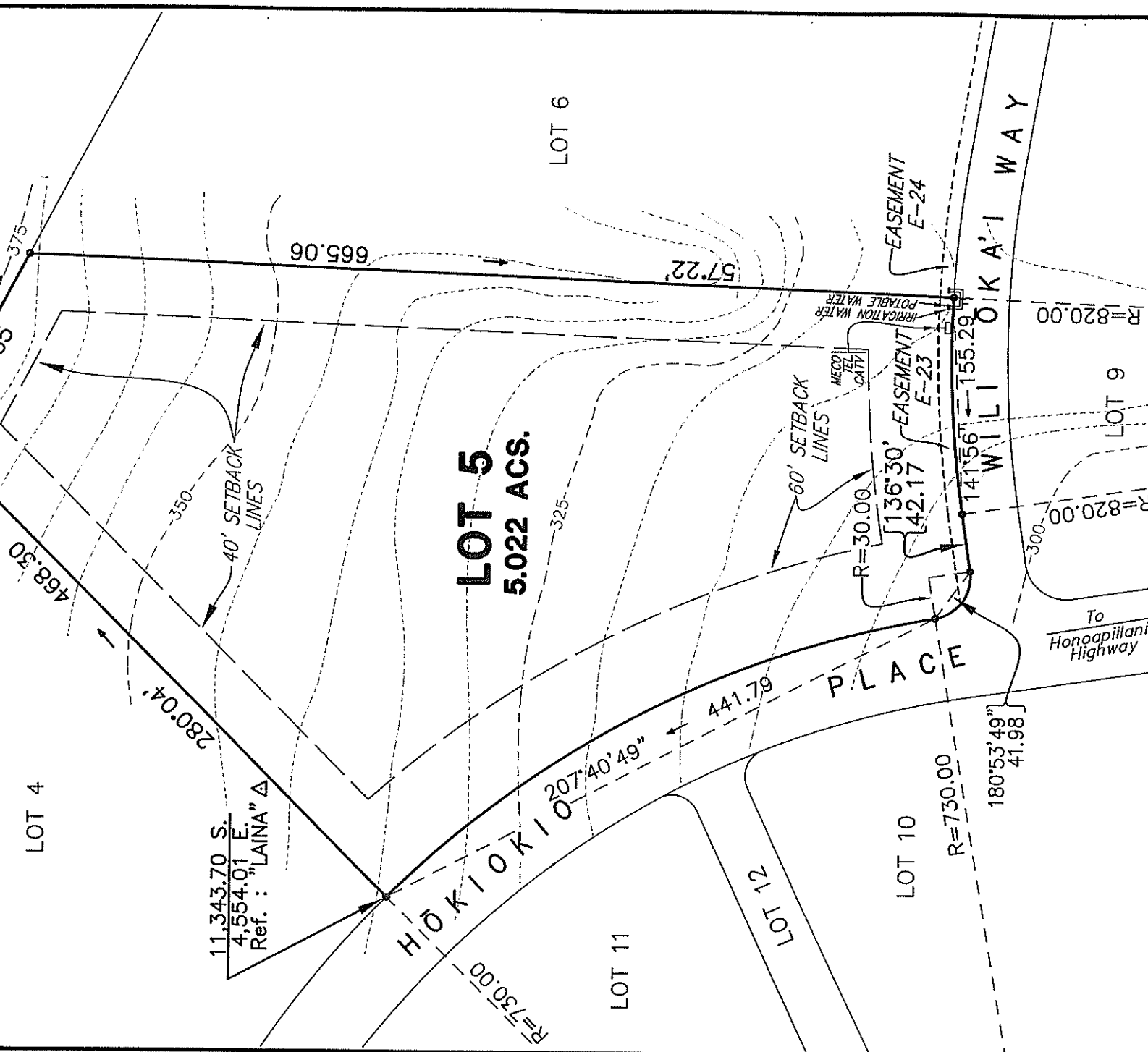
0:\1999\99-073\PUUNOA 1 PLATMAPS\LOT 4

TRUE NORTH
SCALE 1" = 100'

LEGEND:

--- 350 --- CONTOUR

"MAKILA RESERVOIR"
EXIST. EASEMENT 6
(FOR RESERVOIR, DITCH
& ROADWAY PURPOSES)



LOT 4

LOT 5
5.022 ACS.

LOT 6

LOT 9

LOT 10

LOT 11

LOT 12

**PLAT MAP SHOWING
LOT 5**

**PU'UNOA SUBDIVISION
AT LAHAINA, MAUI, HAWAII**

PHASE 1

NOTES:

1. CONTOURS AS SHOWN ARE FROM AERIAL METHODS AND ARE APPROXIMATE.
2. THE LOCATIONS OF THE POTABLE WATER, IRRIGATION WATER, ELECTRICAL, TELEPHONE AND CABLE T.V. LATERALS ARE FROM THE CONSTRUCTION PLAN DRAWINGS AND HAVE NOT BEEN VERIFIED IN THE FIELD.

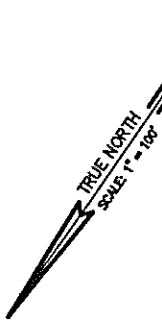


Tax Map Key (2) 4-7-03 : 01 (PORTION)
(2) 4-7-02 : 07, 05, 04 (PORTION)

871 KOLU STREET, SUITE 201
WAILUKU, MAUI, HAWAII 96793

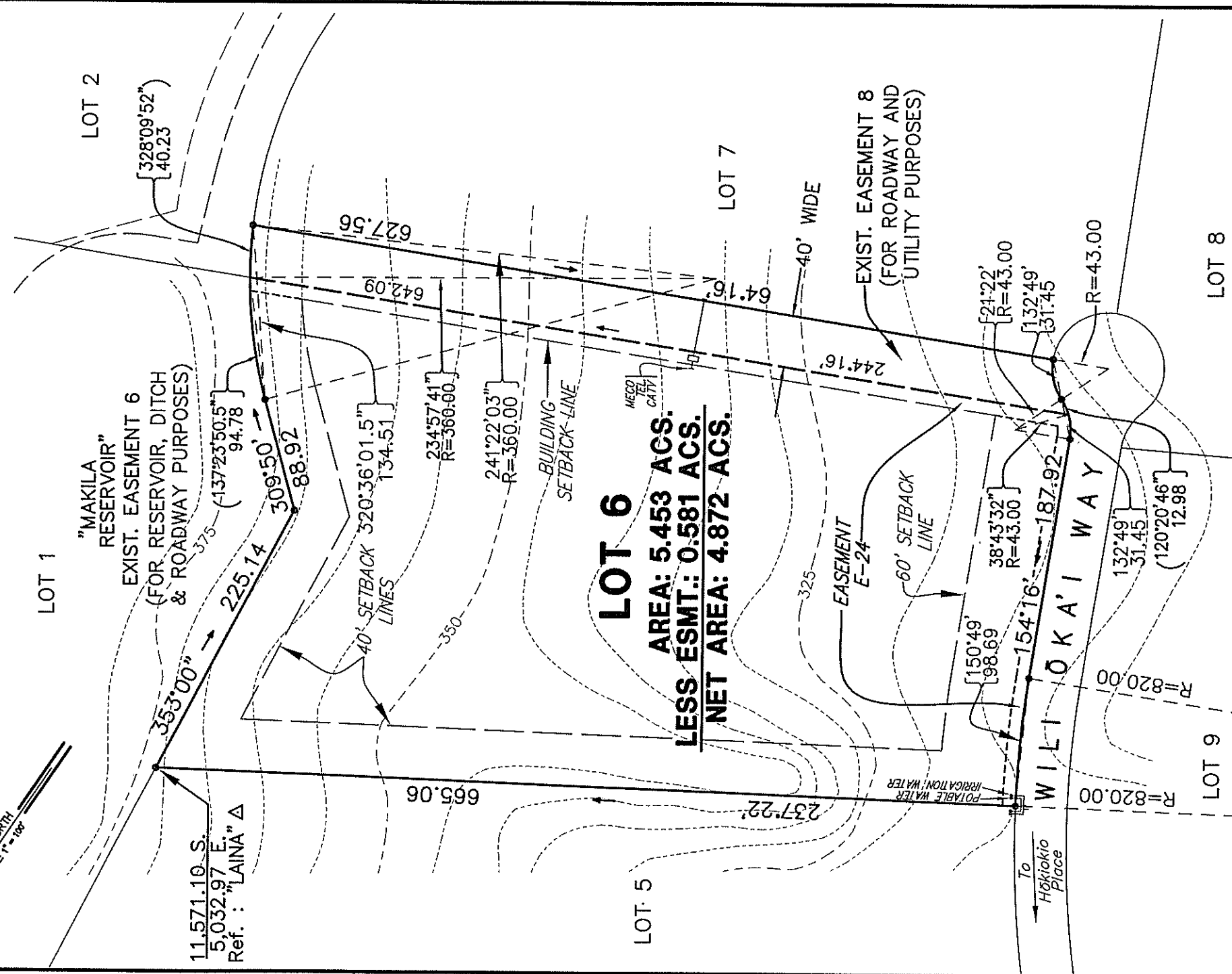
R. T. TANAKA ENGINEERS, INC.
LAND SURVEYORS - CIVIL & STRUCTURAL ENGINEERS

DECEMBER 3, 2003
JOB NO. 99-078



LEGEND:

---350--- CONTOUR



LOT 6
AREA: 5.453 ACS.
LESS ESMT.: 0.581 ACS.
NET AREA: 4.872 ACS.

**PLAT MAP SHOWING
LOT 6
PU'UNOA SUBDIVISION
AT LAHAINA, MAUI, HAWAII**

PHASE 1



Tax Map Key (2) 4-7-03 : 01 (PORTION)
(2) 4-7-02 : 07, 05, 04 (PORTION)

NOTES:

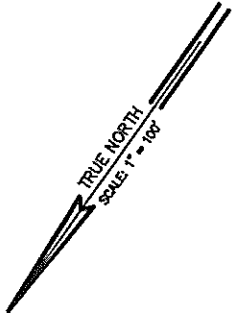
1. CONTOURS AS SHOWN ARE FROM AERIAL METHODS AND ARE APPROXIMATE.
2. THE LOCATIONS OF THE POTABLE WATER, IRRIGATION WATER, ELECTRICAL, TELEPHONE AND CABLE T.V. LATERALS ARE FROM THE CONSTRUCTION PLAN DRAWINGS AND HAVE NOT BEEN VERIFIED IN THE FIELD.

REVISED : OCTOBER 07, 2004
REVISED : JANUARY 12, 2004
DECEMBER 3, 2003

871 KOLU STREET, SUITE 201
WAILUKU, MAUI, HAWAII 96793

R. T. TANAKA ENGINEERS, INC.
LAND SURVEYORS - CIVIL & STRUCTURAL ENGINEERS

JOB NO. 99-078



"MAKILA RESERVOIR"

LEGEND:

---350--- CONTOUR

EXIST. EASEMENT 6
(FOR RESERVOIR, DITCH
& ROADWAY PURPOSES)

LOT 2

GREENWAY
COMMON
AREA "F"

EXIST. EASEMENT 8
(FOR ROADWAY AND
UTILITIES PURPOSES)

241'22"03"
R=360.00

LOT 6

LOT 7
5.114 ACS.

EASEMENT
E-24

R=43.00

To
Hākiakīo
Place

IRRIGATION WATER
POLEABLE WATER

197'52" 151'28"
59.31' -300-

LOT 9

LOT 8

627'56

R=360.00

40' SETBACK
LINES

00'58"
703.12

783.92

346'10"01.5"

05'37"
54.00

354'27"
37.00

(21.72)

527.55

536.03

61'28'

241'28'

61'28'

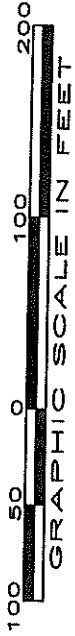
12,579.71 S.
4,791.12 E.
Ref. : "LAINA" Δ

LOT B-1, MAHANALUA NUI SUBDIVISION
(L.U.C.A. FILE NO. 4.724)
TMK: (2) 4-7-01:2
PIONEER MILL CO., LTD. (OWNER)

GREENWAY
COMMON
AREA "G"

PLAT MAP SHOWING LOT 7 PU'UNOA SUBDIVISION AT LAHAINA, MAUI, HAWAII

PHASE 1



Tax Map Key (2) 4-7-03 : 01 (PORTION)

(2) 4-7-02 : 07, 05, 04 (PORTION)

NOTES:

1. CONTOURS AS SHOWN ARE FROM AERIAL METHODS AND ARE APPROXIMATE.
2. THE LOCATIONS OF THE POTABLE WATER, IRRIGATION WATER, ELECTRICAL, TELEPHONE AND CABLE T.V. LATERALS ARE FROM THE CONSTRUCTION PLAN DRAWINGS AND HAVE NOT BEEN VERIFIED IN THE FIELD.

871 KOLU STREET, SUITE 201
WAILUKU, MAUI, HAWAII 96793

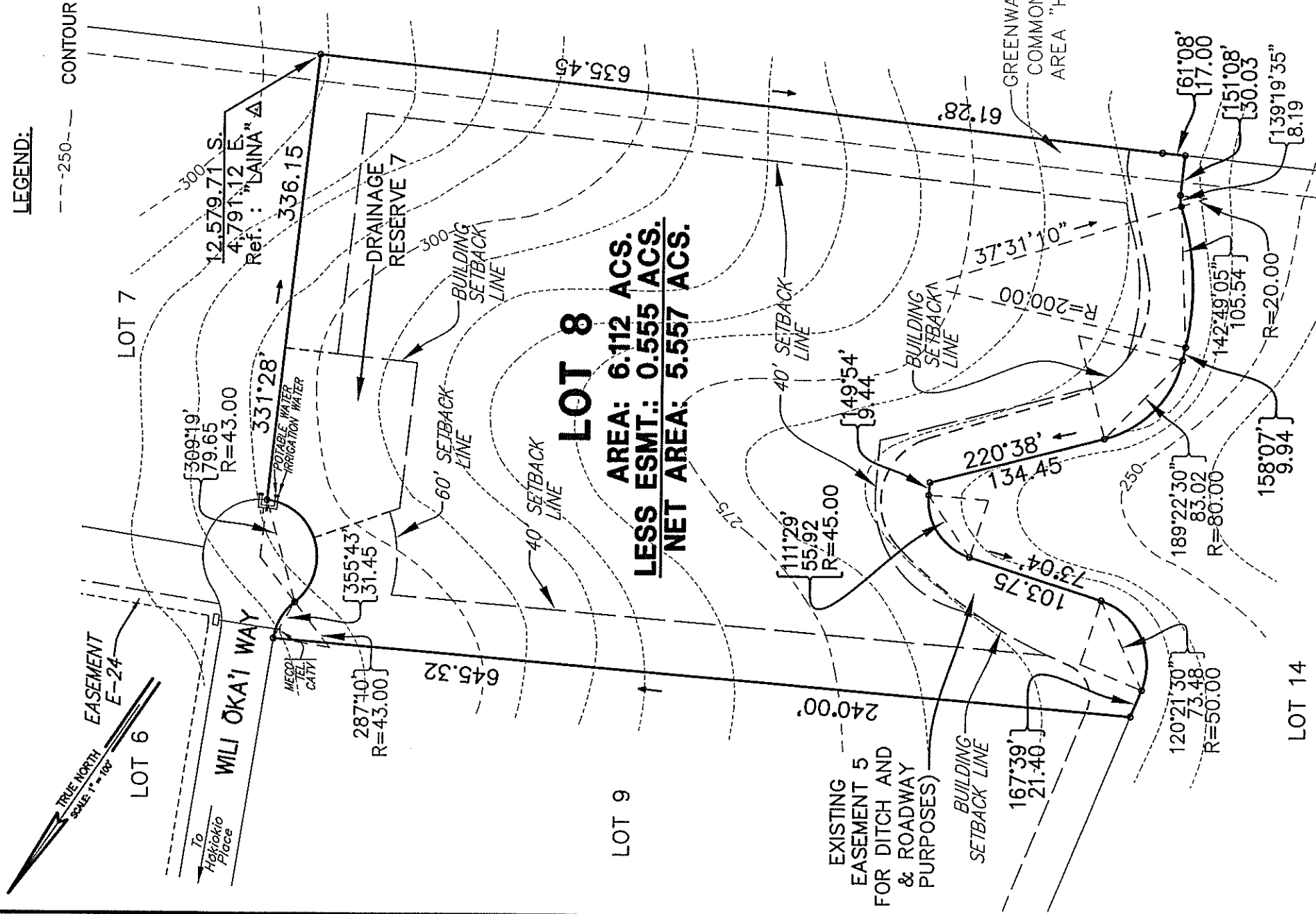
R. T. TANAKA ENGINEERS, INC.
LAND SURVEYORS - CIVIL & STRUCTURAL ENGINEERS

DECEMBER 3, 2003

JOB NO. 99-078

0:\1899\99-073\PUUNOA 1 PLATMAPS\LOT 7

LEGEND:
 --- 250 --- CONTOUR



LOT 8
AREA: 6.112 ACS.
LESS ESMT.: 0.555 ACS.
NET AREA: 5.557 ACS.

**PLAT MAP SHOWING
 LOT 8
 PU'UNOA SUBDIVISION
 AT LAHAINA, MAUI, HAWAII**

PHASE 1



Tax Map Key (2) 4-7-03 : 01 (PORTION)
 (2) 4-7-02 : 07, 05, 04 (PORTION)

NOTES:

1. CONTOURS AS SHOWN ARE FROM AERIAL METHODS AND ARE APPROXIMATE.
2. THE LOCATIONS OF THE POTABLE WATER, IRRIGATION WATER, ELECTRICAL, TELEPHONE AND CABLE T.V. LATERALS ARE FROM THE CONSTRUCTION PLAN DRAWINGS AND HAVE NOT BEEN VERIFIED IN THE FIELD.

871 KOLU STREET, SUITE 201
 WAILUKU, MAUI, HAWAII 96793

R. T. TANAKA ENGINEERS, INC.
 LAND SURVEYORS - CIVIL & STRUCTURAL ENGINEERS

REVISED : OCTOBER 07, 2004
 REVISED : JANUARY 12, 2004
 REVISED : DECEMBER 3, 2003

JOB NO. 99-078

Q:\1999\99-073\PUUNOA 1 PLATMAPS\LOT 8



LEGEND:

---300--- CONTOUR

LOT 9
AREA: 5.584 ACS.
LESS ESMT.: 0.227 ACS.
NET AREA: 5.357 ACS.

**PLAT MAP SHOWING
 LOT 9
 PU'UNOA SUBDIVISION
 AT LAHAINA, MAUI, HAWAII**

PHASE 1



Tax Map Key (2) 4-7-03 : 01 (PORTION)
 (2) 4-7-02 : 07, 05, 04 (PORTION)

871 KOLU STREET, SUITE 201
 WAILUKU, MAUI, HAWAII 96793

R. T. TANAKA ENGINEERS, INC.
 LAND SURVEYORS - CIVIL & STRUCTURAL ENGINEERS

REVISED : OCTOBER 07, 2004
 REVISED : JANUARY 12, 2004
 DECEMBER 3, 2003

JOB NO. 99-078

NOTES:

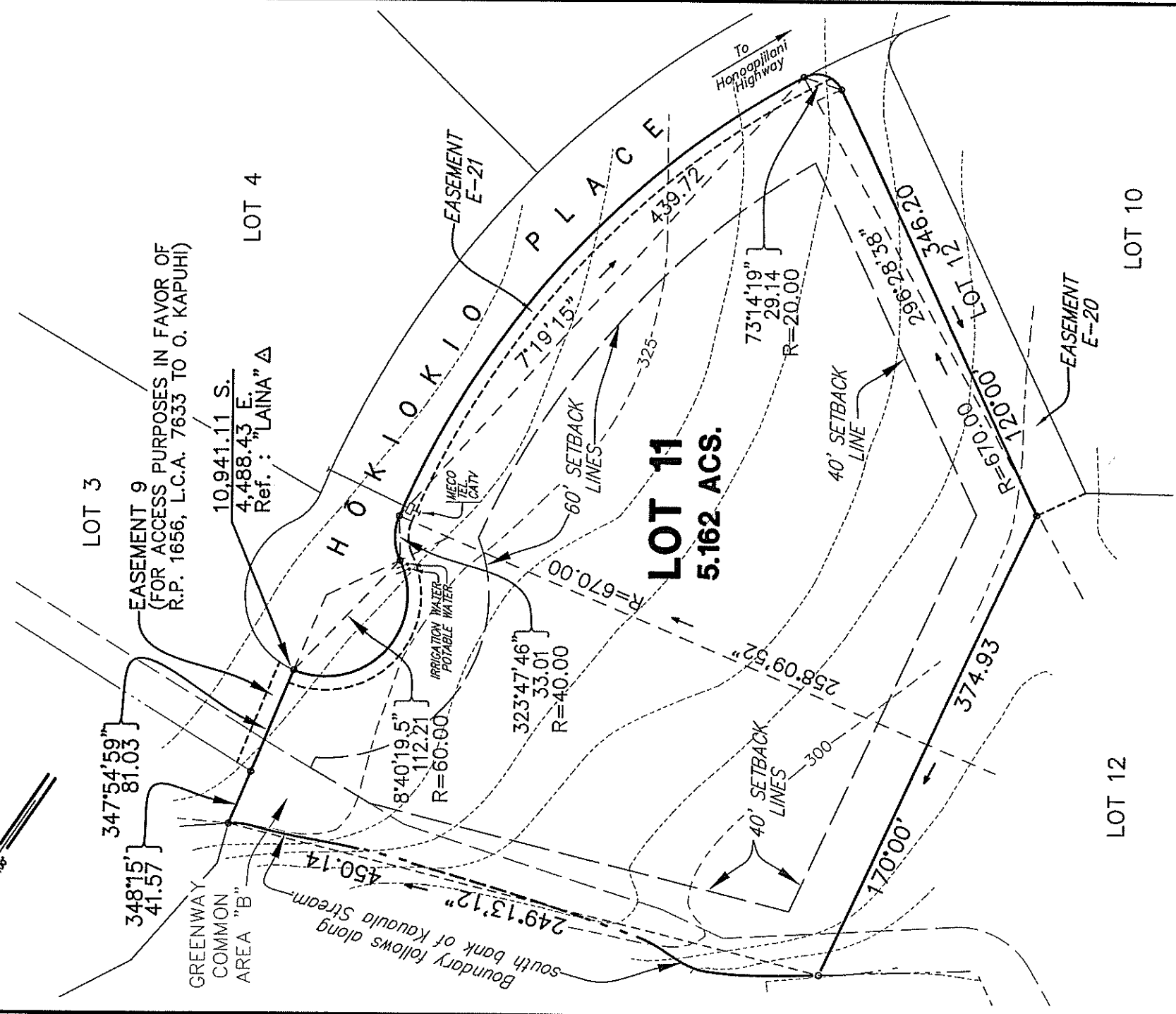
1. CONTOURS AS SHOWN ARE FROM AERIAL METHODS AND ARE APPROXIMATE.
2. THE LOCATIONS OF THE POTABLE WATER, IRRIGATION WATER, ELECTRICAL, TELEPHONE AND CABLE T.V. LATERALS ARE FROM THE CONSTRUCTION PLAN DRAWINGS AND HAVE NOT BEEN VERIFIED IN THE FIELD.

0:\1999\99-073\PUUNOA 1 PLATMAPS\LOT 9



LEGEND:

---325--- CONTOUR



PLAT MAP SHOWING LOT 11 PU'UNOA SUBDIVISION AT LAHAINA, MAUI, HAWAII

PHASE 1



Tax Map Key (2) 4-7-03 : 01 (PORTION)
(2) 4-7-02 : 07, 05, 04 (PORTION)

NOTES:

1. CONTOURS AS SHOWN ARE FROM AERIAL METHODS AND ARE APPROXIMATE.
2. THE LOCATIONS OF THE POTABLE WATER, IRRIGATION WATER, ELECTRICAL, TELEPHONE AND CABLE T.V. LATERALS ARE FROM THE CONSTRUCTION PLAN DRAWINGS AND HAVE NOT BEEN VERIFIED IN THE FIELD.

871 KOLU STREET, SUITE 201
WAILUKU, MAUI, HAWAII 96793

R. T. TANAKA ENGINEERS, INC.
LAND SURVEYORS - CIVIL & STRUCTURAL ENGINEERS

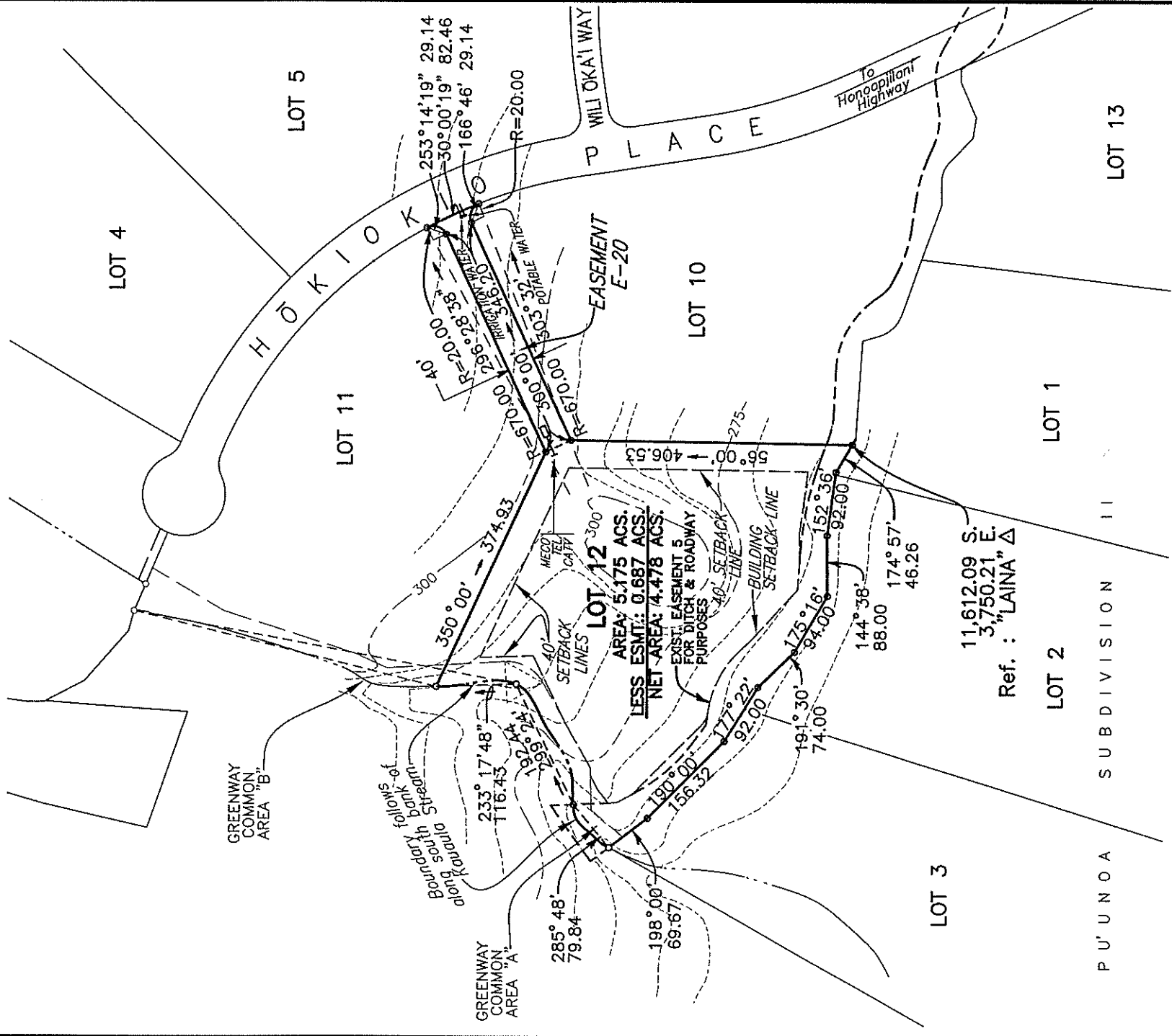
REVISED : OCTOBER 07, 2004
REVISED : JANUARY 12, 2004
REVISED : DECEMBER 3, 2003

JOB NO. 99-078

0:\1999\99-078\PUUNOA 1 PLATMAPS\LOT 11



LEGEND:
 - - -250- - - CONTOUR



PLAT MAP SHOWING LOT 12 PU'UNOA SUBDIVISION AT LAHAINA, MAUI, HAWAII

PHASE 1



Tax Map Key (2) 4-7-03 : 01 (PORTION)
 (2) 4-7-02 : 07, 05, 04 (PORTION)

NOTES:

1. CONTOURS AS SHOWN ARE FROM AERIAL METHODS AND ARE APPROXIMATE.
2. THE LOCATIONS OF THE POTABLE WATER, IRRIGATION WATER, ELECTRICAL, TELEPHONE AND CABLE T.V. LATERALS ARE FROM THE CONSTRUCTION PLAN DRAWINGS AND HAVE NOT BEEN VERIFIED IN THE FIELD.

871 KOLU STREET, SUITE 201
 WAILUKU, MAUI, HAWAII 96793

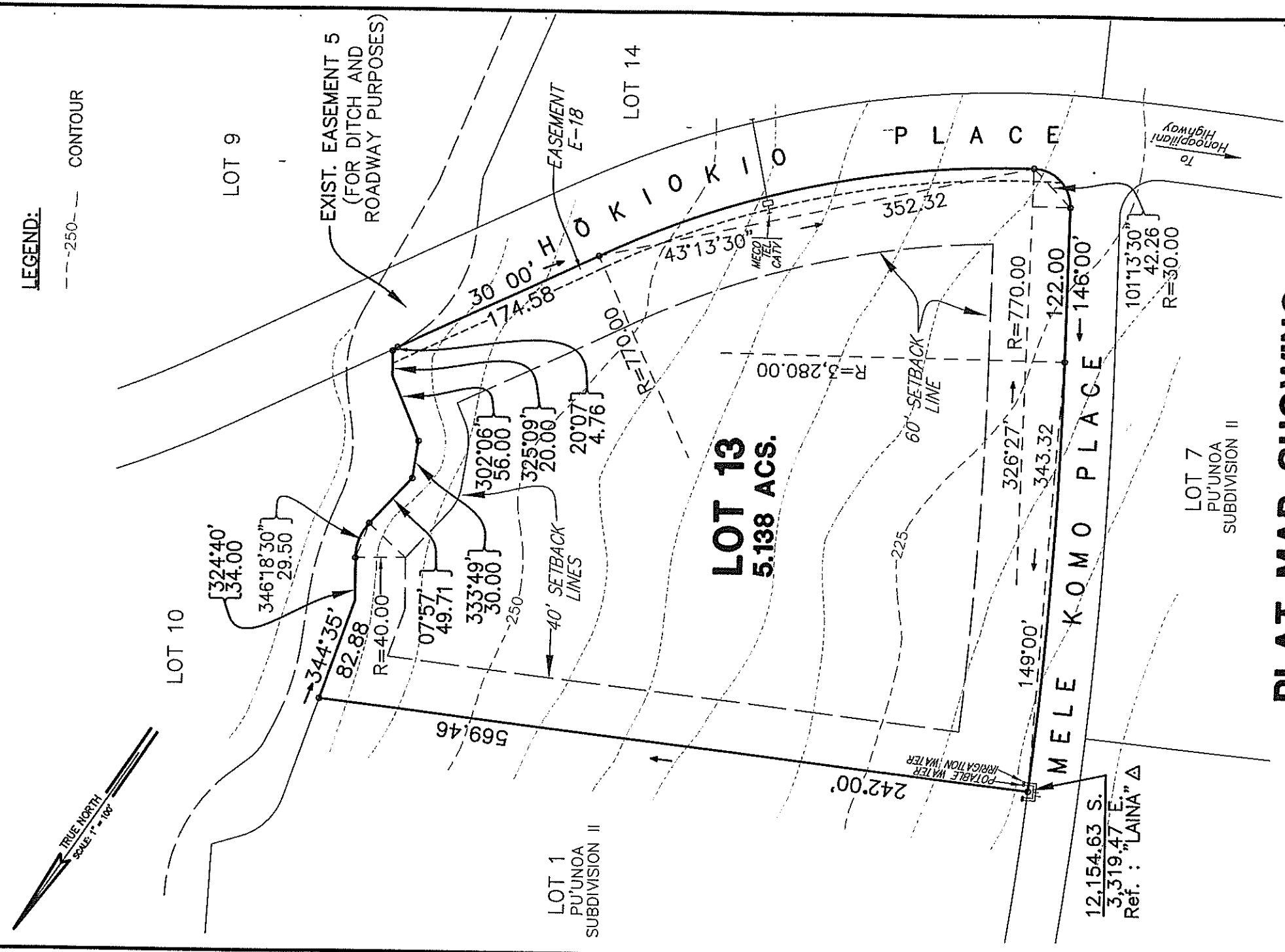
R. T. TANAKA ENGINEERS, INC.
 LAND SURVEYORS - CIVIL & STRUCTURAL ENGINEERS

REVISED : OCTOBER 07, 2004
 DECEMBER 3, 2003

JOB NO. 99-078

Q:\1999\99-078\PUUNOA.1\PLATMAPS\LOT 12

LEGEND:
 --- 250 --- CONTOUR



**PLAT MAP SHOWING
 LOT 13
 PU'UNOA SUBDIVISION
 AT LAHAINA, MAUI, HAWAII**

PHASE 1

NOTES:

1. CONTOURS AS SHOWN ARE FROM AERIAL METHODS AND ARE APPROXIMATE.
2. THE LOCATIONS OF THE POTABLE WATER, IRRIGATION WATER, ELECTRICAL, TELEPHONE AND CABLE T.V. LATERALS ARE FROM THE CONSTRUCTION PLAN DRAWINGS AND HAVE NOT BEEN VERIFIED IN THE FIELD.



Tax Map Key (2) 4-7-03 : 01 (PORTION)
 (2) 4-7-02 : 07, 05, 04 (PORTION)

12,154.63 S.
 3,319.47 E.
 Ref. : "LAINA" Δ

871 KOLU STREET, SUITE 201
 WAILUKU, MAUI, HAWAII 96793

R. T. TANAKA ENGINEERS, INC.
 LAND SURVEYORS - CIVIL & STRUCTURAL ENGINEERS

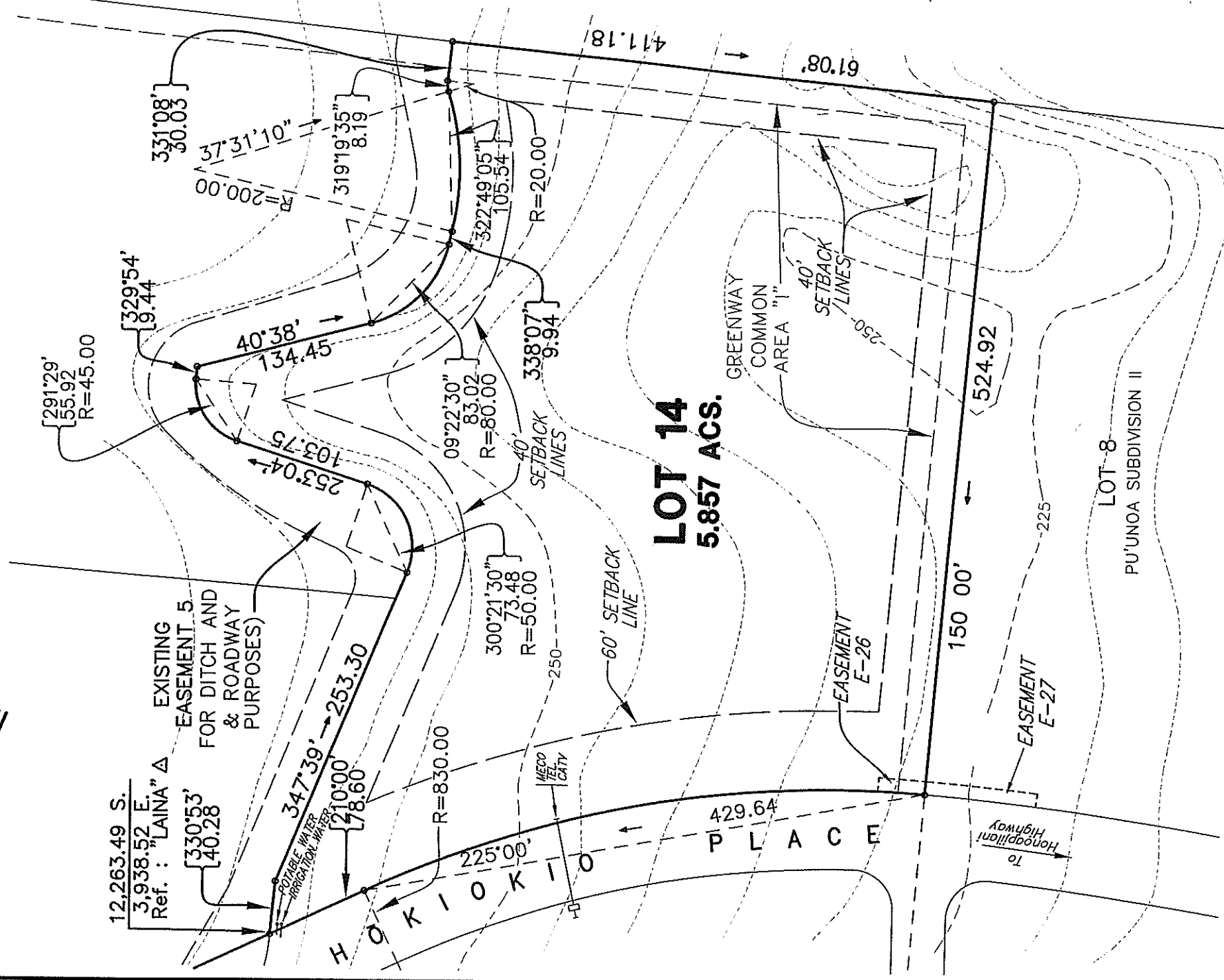
DECEMBER 3, 2003
 JOB NO. 99-078

Q:\1999\99-073\PUUNOA 1 PLATMAPS\LOT 13



LEGEND:

---250--- CONTOUR



PLAT MAP SHOWING
LOT 14
PU'UNOA SUBDIVISION
AT LAHAINA, MAUI, HAWAII

PHASE 1



Tax Map Key (2) 4-7-03 : 01 (PORTION)
(2) 4-7-02 : 07, 05, 04 (PORTION)

NOTES:

1. CONTOURS AS SHOWN ARE FROM AERIAL METHODS AND ARE APPROXIMATE.
2. THE LOCATIONS OF THE POTABLE WATER, IRRIGATION WATER, ELECTRICAL, TELEPHONE AND CABLE T.V. LATERALS ARE FROM THE CONSTRUCTION PLAN DRAWINGS AND HAVE NOT BEEN VERIFIED IN THE FIELD.

871 KOLU STREET, SUITE 201
WAILUKU, MAUI, HAWAII 96793

R. T. TANAKA ENGINEERS, INC.
LAND SURVEYORS - CIVIL & STRUCTURAL ENGINEERS

DECEMBER 3, 2003
JOB NO. 99-078

0:\1999\99-073\PUUNOA II PLATMAPS\LOT 14